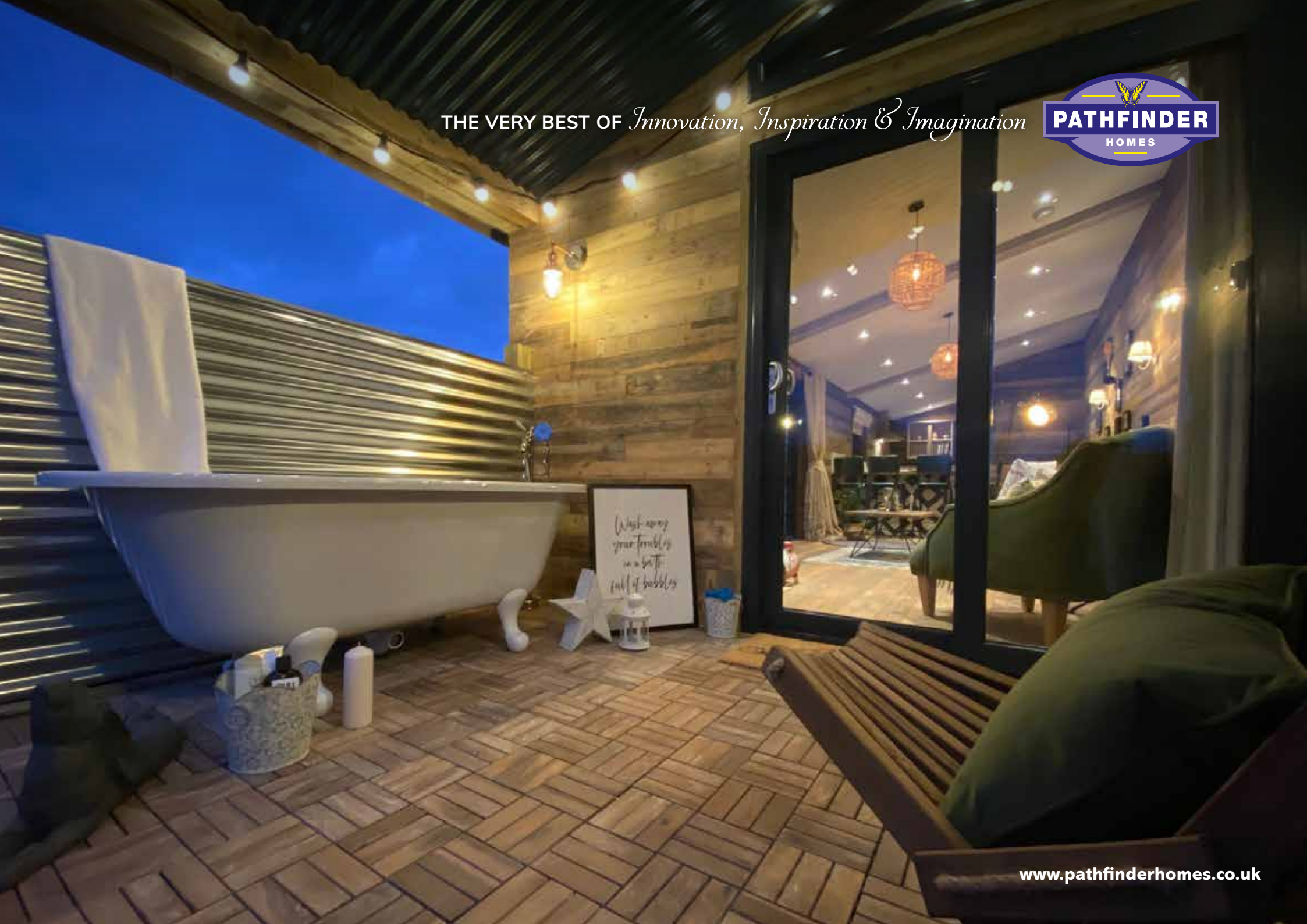


THE VERY BEST OF *Innovation, Inspiration & Imagination*







THE VERY BEST OF
Innovation, Inspiration & Imagination

From just a plot of land, a Pathfinder Home changes everything. A sanctuary, somewhere to make memories, a place to escape, somewhere to treasure and feel at home. Choosing a Pathfinder Home means nothing is impossible, an exclusive, luxurious home, perfectly designed and built to fit with your landscape and budget. Some homes merely capture the imagination, ours animate it.





contents

05 Partner with us

06 Access Range

View, Tuscany, Retreat, Keeper's Lodge, Dusk,
Lighthouse, Gatehouse

22 Superior Range

Willow, La Belle Maison, Silverton, County Retreat,
Silkwood, Forest Lodge

36 Ultimate Range

Petrichor, Botswana, Evolution, Hawthorne,
Sunrise, Summit, DreamCatcher, High View

54 Single Range

Croft, Single Tuscany, La Rochelle,
Ocean View, Meadow View

66 Garden Pods & Out Buildings

70 The Extra Mile

Warranties, Aftercare, Propping & Dressing,
Build Spec, Environment policy and Core values.



Partner with us

Our Core Values represent exactly what we stand for Innovation, Inspiration and Imagination. Our homes are a manifestation of our passion, they cannot be measured, simply felt. We work in synchronisation with our customers to help achieve your goals and create a better place to work, live and relax.

We listen

Through a complete and comprehensive understanding of your own values, aims and objectives we work hand in hand to create a home that not only ticks the boxes for you but also your customers. We offer an incomparable service throughout the whole process of building and long after.

We have experience

Established in 1958, we have always been known for our aspirational and architecturally brilliant designs. Built to BS3632:2015 and regulated by the National Caravan Council, with the finest interiors and awe-inspiring exteriors Pathfinder Homes is the luxury lodge manufacturer you've been looking for.

We are innovative

Put simply, we break the mould. With cutting edge technology, creative genius and sustainably sourced materials, we push boundaries to the limit. The art of creation means our homes create culture surplus to requirements.

We are technical

Our innovative and ground breaking designs are tested and created with industry expert's advice and control. Every home is built to exceed BS3632:2015, is independently tested and we boast average U Values far greater than the industry, ultimately saving you time, money and worry.

the **access** range

It's our experience, knowledge and expertise that makes us different. A range put together especially for clients looking for low cost homes built to a high quality.

Homes in this range are still tinted with the unique Pathfinder Homes quality but with a reduced budget in mind.







the**access**range

the**View**

A breath of fresh air

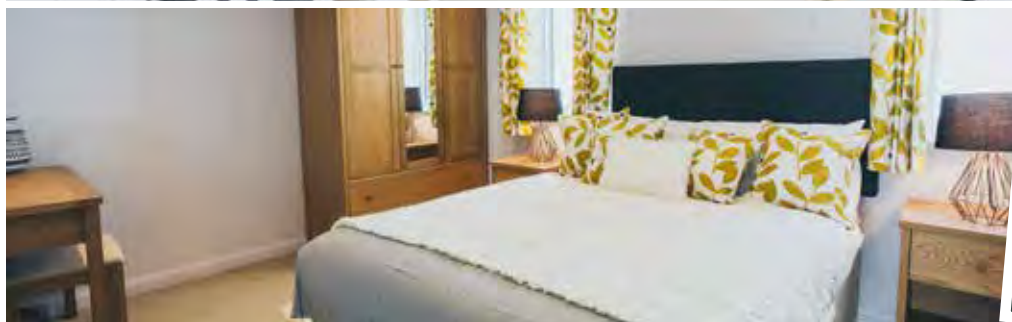
This home truly is a breath of fresh air within the industry and what's more? It's our most affordable home to date. Created to the exemplary Pathfinder Homes standards with the rental market in mind, this home offers all the basic luxuries you would expect to find in a Pathfinder Home but at a great price.



theView | at a glance

Energy Rating: **147**

Based on a: **40' x 20' - 2 Bed**

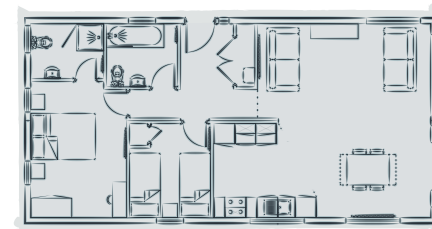


upgrade pack

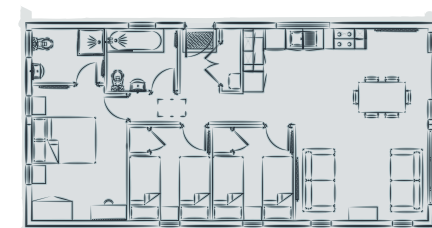
- ✓ Unique & luxurious features of the standard home
- ✓ Ceramic tiling in kitchen & bathrooms
- ✓ Laminate flooring in main living areas
- ✓ Larger shower in master ensuite
- ✓ Additional kitchen units & appliances
- ✓ Stainless steel finishes
- ✓ Designer furniture

special features

- ✓ Hot tub ready
- ✓ Howdens Kitchen
- ✓ Built to BS3632:2015
- ✓ UPVC double glazing
- ✓ Specially selected curtains from Ena Shaw
- ✓ Beautifully designed interior
- ✓ 40 year guarantee roof
- ✓ Feature glazed end
- ✓ Master bedroom with ensuite, featuring luxury shower wall for easy cleaning and maintenance
- ✓ USB & TV points in all bedrooms
- ✓ Upgraded beds, designed for longevity
- ✓ Fabrics on all sofas and headboards, stain repellent and tested to a 45,000 rub test

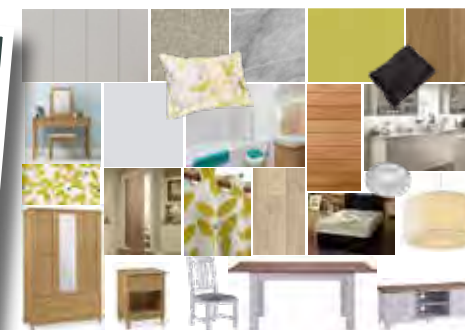


2 Bedroom Model



3 Bedroom Model

interior options



360° Virtual Tour
available online

Discover more at
www.pathfinderhomes.co.uk



the**access**range

the**Tuscany**

e una cosa bellissima
A little taste of Tuscany

The Pathfinder Homes, recently re-imagined Tuscany Lodge brings that rustic, getaway feel where all stresses are relieved and quality time is captured. The Tuscany holds the best aspects of a botanical garden, having a light and breezy feel with a modern yes cosy feel flowing throughout this beautiful, bestselling home. This spacious & airy home expresses a base for holiday time where enjoyment is essential and relaxation is guaranteed. The perfect home for any holiday or indeed residential park.

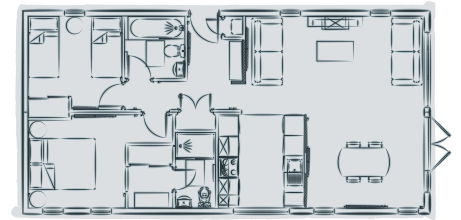
the**Tuscany** | at a glance

Energy Rating: **147**

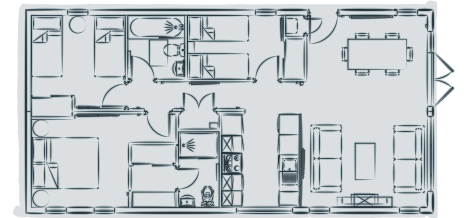
Based on a: **40' x 20' - 2 Bed**

special features

- ✓ Feature fireplace
- ✓ Unique & cosy design with features in every room
- ✓ Oak furniture throughout



2 Bedroom Model



3 Bedroom Model



**Bespoke options
available**



360° Virtual Tour
available online

Discover more at
www.pathfinderhomes.co.uk





the**access**range

the**Retreat**

Classic, Elegant & Comfortable

The new Retreat combines a sense of elegance and comfort, with its rustic features creating, quite literally, a retreat from the hustle and bustle of the real world. This home is a perfect blend of class and sophistication, without looking out of place surrounded by countryside.

This home is exactly as described, a place to get away, switch off, and enjoy the simpler aspects of life. It's almost contradicting features have been so thoroughly considered that they tie in with the old cliché, opposites attract.

the **Retreat** | at a glance

Energy Rating: **177**

Based on a: **44' x 20' - 2 Bed**



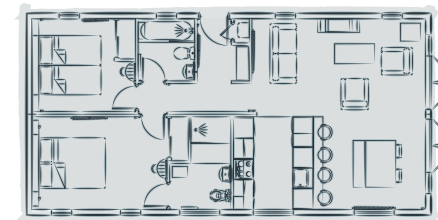
special features

- ✓ Feature walls & recessed shelving in bedrooms
- ✓ Rustic farmhouse style
- ✓ Hand crafted fixtures & fittings
- ✓ Feature Fireplace
- ✓ Glazed entrance with french doors
- ✓ Vertical cedar cladding

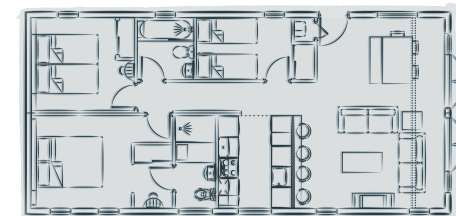


 **360° Virtual Tour**
available online

Discover more at
www.pathfinderhomes.co.uk



2 Bedroom Model



3 Bedroom Model

 **Bespoke options available**





the**access**range

theKeeper'sLodge

Finders, Keepers

Thanks to the combination of its beautiful, yet highly durable Thermowood exterior and country classic interior, the Keepers Lodge is perfectly at home on any woodland or country park.

With its Scottish Gamekeepers theme running throughout, the Keepers Lodge invites relaxation and comfort with a small whisky and the faux log burner warming those winter nights.

the **Keeper's Lodge** at a glance

Energy Rating:

182

Based on a:

45' x 20' - 2 Bed



special features

- ✓ Black uPVC windows and doors
- ✓ Huge fireplace with solid wood mantelpiece and natural grey flagstone hearth
- ✓ Dimplex smoke effect log stove
- ✓ Feature – engineered natural oak, wall to fire and bar area
- ✓ All integrated appliances including a built-in wine cooler
- ✓ Chunky oak wooden desk
- ✓ Wireless sound system
- ✓ Single ended roll bath with chrome feet in bathroom



360° Virtual Tour
available online

Discover more at
www.pathfinderhomes.co.uk



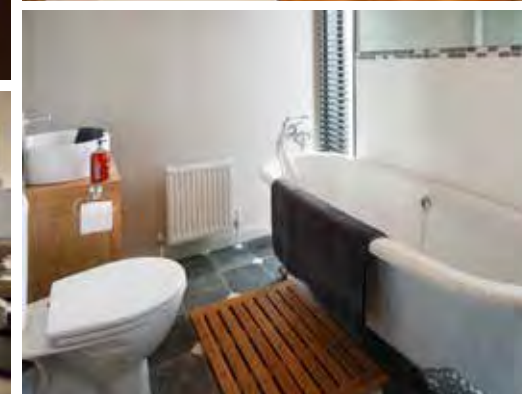
2 Bedroom Model



3 Bedroom Model



**Bespoke options
available**





the**access**range

theDusk

The mysterious, darker stage of twilight.

The Dusk is modern, warm, and thoughtfully designed, whilst also intriguing, wistful, and reflective. Born from the desire to create a naturally stylish, decorative, and spirited space.

Designed not to replace or change but to compliment your lifestyle. Whether you're entertaining or relaxing after a hard day at work, Dusk is a place fit for royalty, somewhere you are proud to call home.

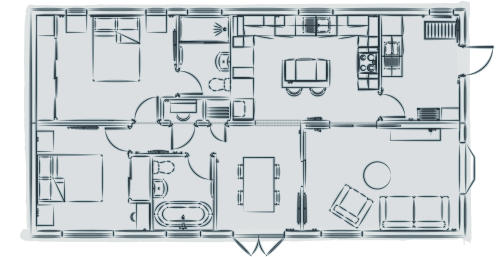
the**Dusk** | at a glance

Energy Rating:

177

Based on a:

44' x 20' - 2 Bed



2 Bedroom Model



**Bespoke options
available**

special features

- ✓ Fine quality soft furnishings and fixtures and fittings
- ✓ Large panoramic window and French doors in the living area
- ✓ Fully equipped galley kitchen
- ✓ Integrated fridge/freezer, dishwasher, integrated oven and hob
- ✓ Two spacious bedrooms, one with en-suite and full height windows
- ✓ Family bathroom with shower over bath

Discover more at
www.pathfinderhomes.co.uk





the**access**range

the**Lighthouse**

Illuminate your lifestyle.

The strategically placed windows and full length glazed doors allow the home to be flooded with natural light as well as creating an open yet cosy feeling. Cleverly designed, this home hosts a whole range of luxuries you wouldn't normally expect to find.

The Light House is built to a very high residential standard, perfect to reside in permanently or use as a luxurious holiday home! Dressed and designed to create a perfect blend of elegance and glory, internally housing smooth finish walls, a modern feature fireplace and contemporary statement furniture.

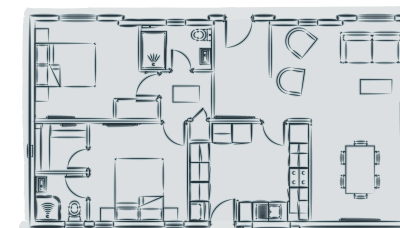
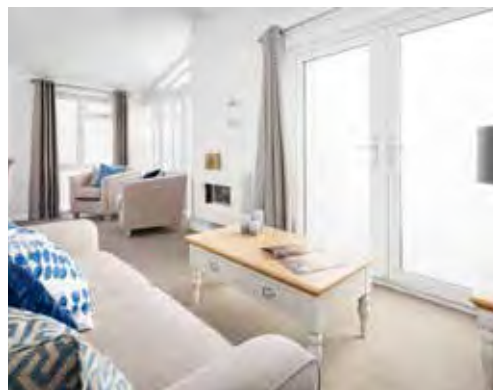
the **Lighthouse** at a glance

Energy Rating:

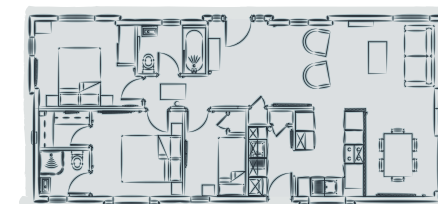
174

Based on a:

42' x 20' - 2 Bed



2 Bedroom Model



3 Bedroom Model



**Bespoke options
available**

special features

- ✓ Exterior CanExcel cladding and Resitex
- ✓ Dark grey UPVC double glazed doors and windows
- ✓ Brushed chrome exterior lights
- ✓ Fully integrated kitchen appliances and utility room
- ✓ Feature entrance
- ✓ Designer furniture
- ✓ Fantastic storage solutions
- ✓ Walk-in wardrobe



360° Virtual Tour
available online

Discover more at
www.pathfinderhomes.co.uk





the **access** range

the Gatehouse

Classic park home living.

Regardless of where you are inside this beautiful residential home, the natural light floods in making it uplifting & airy, space is most certainly not an issue. This home is an eclectic mix of traditional, classic, modern yet retro design with a sophistication throughout that places this home above any other! This Park Home offers a wonderful, modern, elegant look that connotes a beautiful town house which is perfect for any residential park or private land.

the **Gatehouse** at a glance

Energy Rating:

173

Based on a:

40' x 20' - 2 Bed



special features

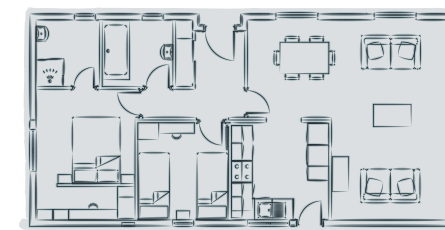
- ✓ Walk in Wardrobes
- ✓ External Feature Slate
- ✓ Modern yet traditional interior
- ✓ Spacious living area



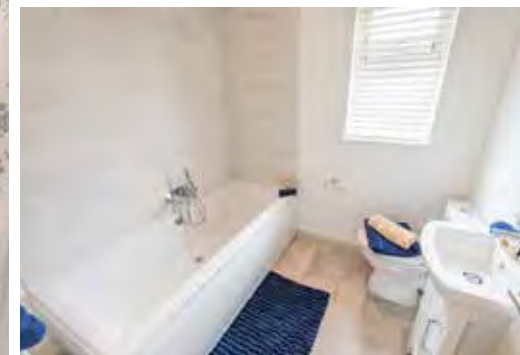
360° Virtual Tour

available online

Discover more at
www.pathfinderhomes.co.uk



2 Bedroom Model



the **superior** range

Thoughtfully designed and carefully crafted using the finest materials. The Pathfinder Homes Superior Range goes that extra step further, not just with the luxury you would expect to find but with those finer, small details taking each design to an unexpected level. Strong character and unquestionable quality, be the superior.





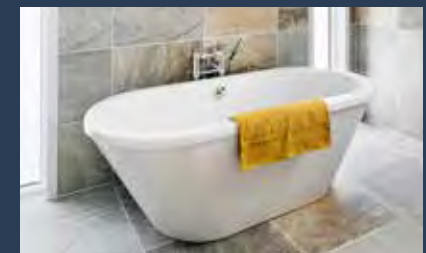


the**superior**range

theWillow

Effortlessly stylish & perfectly designed.

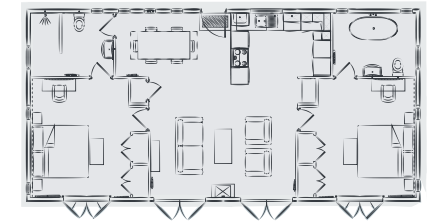
The Willow is effortlessly stylish, architecturally brilliant and practically designed. The Willow offers natural lifestyle inspiration in every corner. The symmetrical, centre lounge design emphasises the focus on the living areas, maximising social, open living and promoting a character of life.



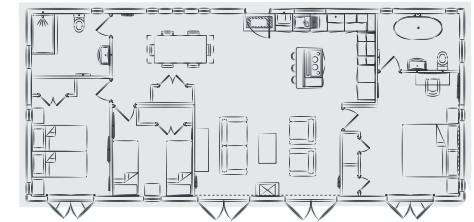
the **Willow** | at a glance

Energy Rating: **201**

Based on a: **38' x 20' - 2 Bed**



2 Bedroom Model



3 Bedroom Model

special features

- ✓ Stunning symmetrical design
- ✓ Centre lounge
- ✓ Vaulted ceilings throughout
- ✓ Remote control bluetooth sound system
- ✓ Ensuite to both bedrooms
- ✓ Freestanding bath
- ✓ Fully tiled bath room



 **360° Virtual Tour**
available online

Discover more at
www.pathfinderhomes.co.uk



 **Bespoke options available**



the**superior**range

LaBelleMaison

Savoir vivre.

There is a reason why these two simple French words have become an internationally recognized expression for something quintessentially French and utterly desirable: the art of living – La Belle Maison.

This classic design mixes a typical French home with the class of a luxury holiday chateau in the South of France, suitable for both residential and holiday locations.



laBelleMaison at a glance

Energy Rating:

174

Based on a:

45' x 22' - 2 Bed



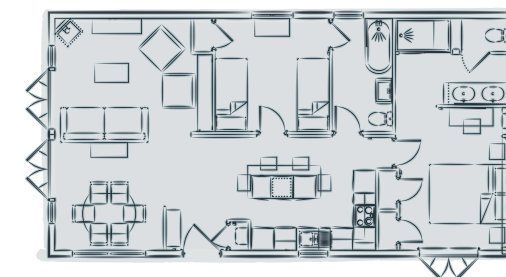
special features

- ✓ Internal groove panel cladding for that typically rustic French feel
- ✓ Beautiful distressed laminate flooring throughout
- ✓ Ladies dressing table with chateau style mirror
- ✓ Ample shelving space
- ✓ Opti-flame electric wood-burning stove



360° Virtual Tour
available online

Discover more at
www.pathfinderhomes.co.uk



2 Bedroom Model





the**superior**range

the**Silverton**

A fusion of organic & industrial design

Simple, natural design creates luxury for family holidays. Fitting into the eco design, the natural materials used manufactures a natural theme from the cedar cladding, lead flashing, galvanised guttering & sage green windows and doors.

The exterior is made simple, clean cut, promoting the natural pure design of the Silverton, welcoming any lifestyle into a cosy intimate lodge. The Silverton is practical and prestigious.

the **Silverton** at a glance

Energy Rating:

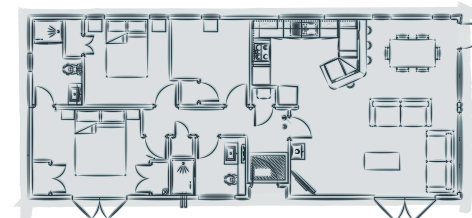
148

Based on a:

42' x 20' - 2 Bed



2 Bedroom Model



3 Bedroom Model

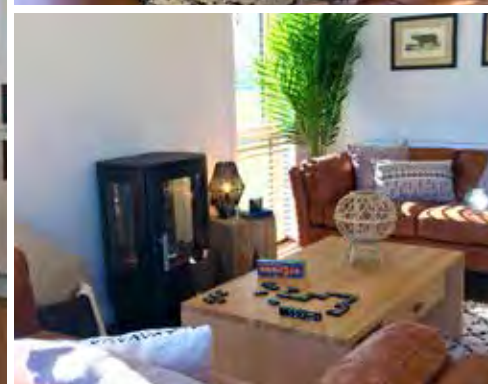
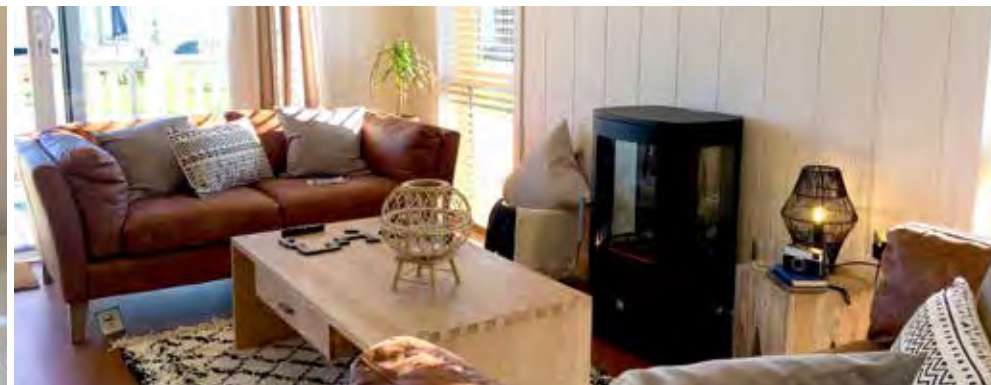
special features

- ✓ Genuine Bamboo Flooring throughout
- ✓ Split level kitchen worktop
- ✓ Exposed Beams
- ✓ Ecological interior throughout
- ✓ Fully tiled bathroom and en-suite
- ✓ En-suite with wet room



360° Virtual Tour
available online

Discover more at
www.pathfinderhomes.co.uk





the**superior**range

theCountyRetreat

Future living in today's world.

The reinvented County Retreat combines a rustic, industrial, design with a select, modern & rich interior to create a truly bespoke home that fits the needs of any modern home, including SMART features such as SMART Lighting, Keyless Entry and SMART Heating.



the **CountyRetreat** at a glance

Energy Rating:

167

Based on a:

45' x 22' - 2 Bed



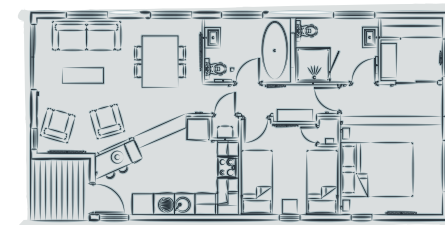
special features

- ✓ Built to BS3632:2015 residential standard
- ✓ Integrated courtyard with 'Living Wall'
- ✓ SMART home features as standard
- ✓ Internal & external anthracite window frames
- ✓ Designer luxury vinyl tile flooring
- ✓ Mood lighting & feature interior

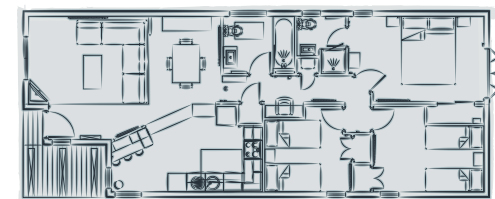


360° Virtual Tour
available online

Discover more at
www.pathfinderhomes.co.uk



2 Bedroom Model



3 Bedroom Model



**Bespoke options
available**





the**superior**range

the**Silkwood**

A home for all seasons.

One of our most popular residential Park Homes, the Silkwood is a stunning, simple home featuring every practical necessity along with awe inspiring luxury. With a fresh, contemporary look both outside and in, the Silkwood is a peaceful, relaxing home which has been loved by parks across the country for many years.

the **Silkwood** at a glance

Energy Rating:

167

Based on a:

45' x 22' - 2 Bed



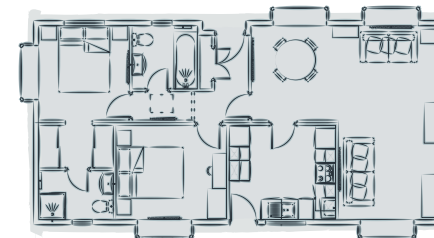
special features

- ✓ Spacious kitchen with a choice of finishes
- ✓ Fine quality fixtures and fittings
- ✓ Master bedroom with stylish en-suite and walk-in wardrobe
- ✓ Second bedroom in coordinated finish
- ✓ Bright, modern family bathroom

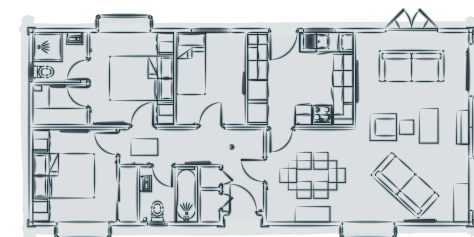


360° Virtual Tour
available online

Discover more at
www.pathfinderhomes.co.uk



2 Bedroom Model



3 Bedroom Model



**Bespoke options
available**





the**superior**range

theForest

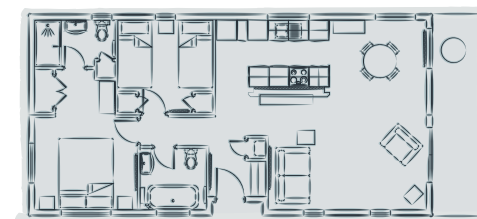
Your very own 'New Forset' retreat.

The Forest is one of our most spacious homes with perfect areas for entertaining. In this perfectly considered space, you can make breakfast, entertain guests for dinner, or sit comfortably on the sofa in front of the TV. In true Pathfinder Homes' style, this design represents a merge with nature, with the opportunity to relax on the porch in the warm summer evenings or crisp, clear autumn nights, staying undercover to enjoy the local scenery.

the**Forest** at a glance

Energy Rating: **167**

Based on a: **45' x 20' - 2 Bed**

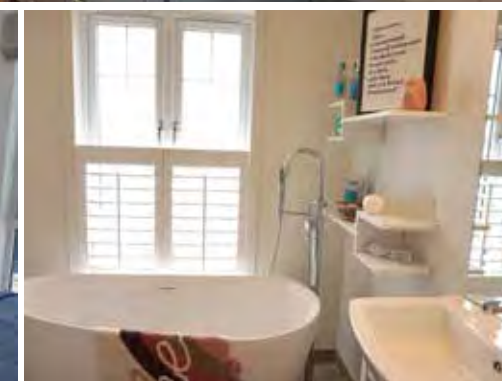
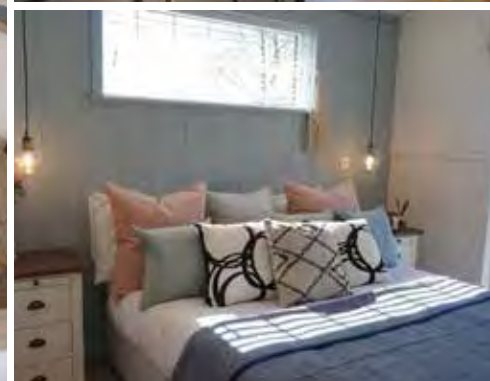


2 Bedroom Model

 **Bespoke options available**

special features

- ✓ Home away from home interior
- ✓ Open plan dining and lounge
- ✓ American style veranda



 **360° Virtual Tour**
available online

Discover more at
www.pathfinderhomes.co.uk



the **ultimate** range

The style you love and the quality you deserve; the Ultimate Range more than lives up to the Pathfinder Homes strong reputation. Renowned for creating innovative homes built to the highest standard the Ultimate Range assures every element of your new home is complete perfection. Setting the standard for the entire industry, our Ultimate Homes face no competition, purely imitation.







the**ultimate**range

the**Petrichor**

Future thinking fused with recycled & reclaimed materials in a fresh approach



Created with sustainability at its heart and the planet in mind, the Petrichor has been designed with a meticulous attention to detail and a relentless 'That'll do, won't do' approach. This flagship home has been crafted from individually selected recycled, reclaimed, and preloved materials, all of which have a unique history of their own.

the **Petrichor** at a glance

Energy Rating: **167**

Based on a: **45' x 20' - 2 Bed**



2 Bedroom Model

 **Bespoke options available**

special features

- ✓ Built to BS3632 residential standards
- ✓ Each home is unique, created using recycled, reclaimed and preloved materials
- ✓ Light and spacious open-plan living area with a large panoramic window and French doors
- ✓ Fully equipped galley kitchen with integrated appliances
- ✓ Outdoor shower and bath
- ✓ Large walk-in wardrobe

 **360° Virtual Tour**
available online

Discover more at
www.pathfinderhomes.co.uk





the**ultimate**range

the**Botswana**

An African adventure.

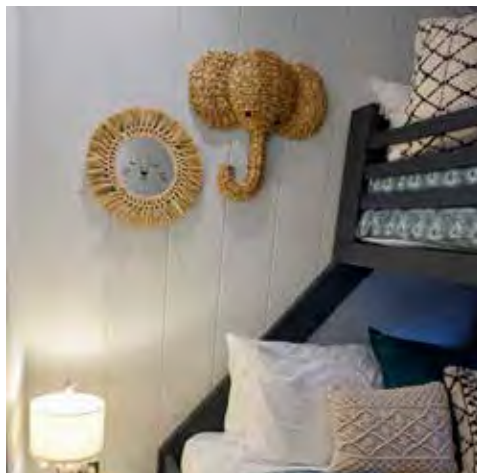
Inspired by the interiors of an African adventure, this lodge offers instagramable shots at every turn. Designed with practicality in mind and memorable places in the heart, this offers everything any small family or couple could need for the perfect holiday.

This home transports you to a different world without even taking a flight, allowing you to leave your troubles and the mundane every day at the door.

the **Botswana** at a glance

Energy Rating: **187**

Based on a: **46' x 22' - 2 Bed**

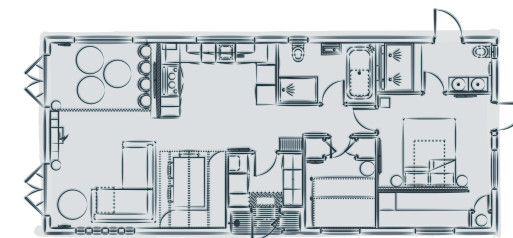


special features

- ✓ Design led interior with African vibes
- ✓ Large panoramic windows throughout & roof lights
- ✓ Designer, handle less kitchen
- ✓ Integrated appliance and pop up extractor
- ✓ Two stunning bedrooms, one with beautiful en-suite
- ✓ Freestanding bath & separate walk-in showers

 **360° Virtual Tour**
available online

Discover more at
www.pathfinderhomes.co.uk



2 Bedroom Model

 **Bespoke options
available**





the**ultimate**range

the**Evolution**

A revolutionary creation.

The crème de la crème of our new home design. Utilising the imagination of our creatives, the experience of an external design house & the technical genius of our team, here it is... The Evolution.

Incorporating modern materials & only the finest ingredients, this home is designed to offer the practicality of a bricks & mortar home with the opulence of lodge living.

the**Evolution** at a glance

Energy Rating:

173

Based on a:

45' x 22' - 2 Bed



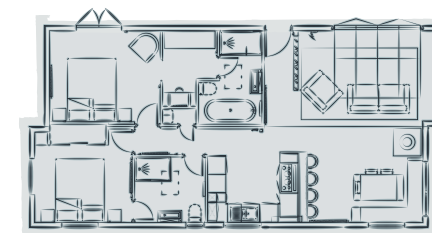
special features

- ✓ built in snug area
- ✓ Contemporary free standing wood burner
- ✓ Electric Velux windows
- ✓ Free-standing bath
- ✓ Feature walls in both bedrooms
- ✓ Rainfall showers
- ✓ Designer herringbone flooring

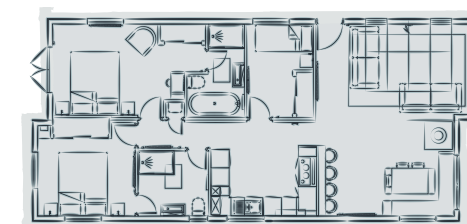


360° Virtual Tour
available online

Discover more at
www.pathfinderhomes.co.uk



2 Bedroom Model



3 Bedroom Model



**Bespoke options
available**





the**ultimate**range

theHawthorne

A original mono-pitched home.

Elevating imagination, we have inspected every last inch of detail yet have left plenty of room for space, freedom and breath-taking reality. Boasting its ever popular centre lounge configuration ensuring the kitchen, lounge and dining areas seamlessly integrate although, always creating an air of difference & space. This home is the perfect place for those looking to host friends and family due to it's ingenious design whilst, at the same time being perfect for those simply lusting after some 'me time'.

the **Hawthorne** | at a glance

Energy Rating:

173

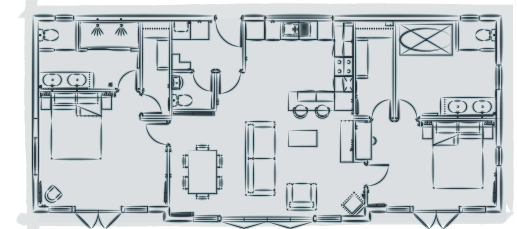
Based on a:

45' x 22' - 2 Bed



special features

- ✓ Built to BS3632:2015
- ✓ Mono-pitch Roof
- ✓ Hi-Pitch Ceiling
- ✓ Architecturally inspired external shape
- ✓ Two stunning interior options
- ✓ Centre lounge layout
- ✓ Fully glazed, roof line waterfall showers
- ✓ High spec ensuites with detailed design



2 Bedroom Model



Bespoke options available

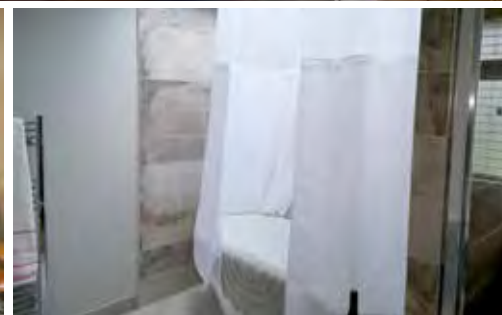
interior options



360° Virtual Tour

available online

Discover more at
www.pathfinderhomes.co.uk





the**ultimate**range

the**Sunrise**

Ecological outside, luxury inside,
quality throughout.

The Sunrise is our very own Grand Design. Where the latest ecological design meets the highest standard of internal finish to create the ultimate holiday retreat without compromise.

Wherever the setting; woodland, open countryside or coast – one glimpse of the natural cedar cladding, and architecturally stunning curved eco-roof, planted with beautiful sedum that fits perfectly with its surrounding.

the**Sunrise** at a glance

Energy Rating:

206

Based on a:

40' x 20' - 3 Bed



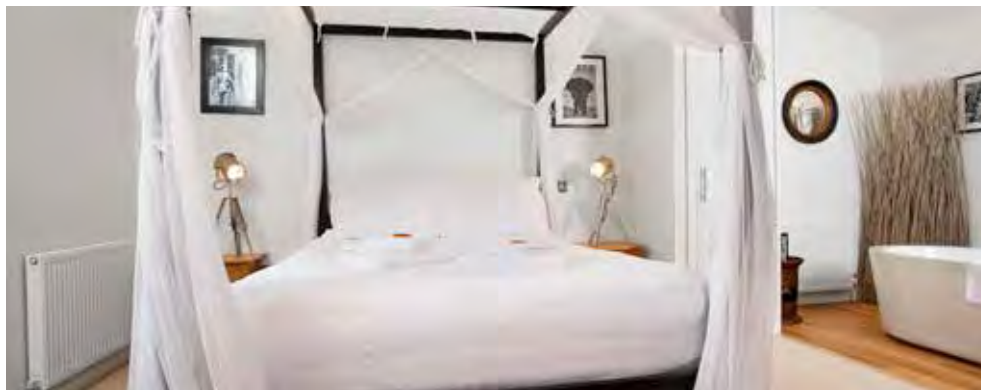
special features

- ✓ Eco curved sedum roof
- ✓ Open plan bedroom & bathroom
- ✓ Heated towel radiators in bathrooms
- ✓ Dark grey exterior window frames with white interior
- ✓ Vaulted ceiling throughout

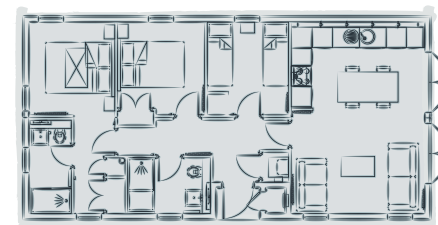


 **360° Virtual Tour**
available online

Discover more at
www.pathfinderhomes.co.uk



2 Bedroom Model



3 Bedroom Model



**Bespoke options
available**





the**ultimate**range

theSummit

The thrill of new heights.



Conceived from pure Alpine vacation indulgence, The Summit was born. The Summit is a property to be reckoned with, a definite discerning 5 star! This lodge is exclusive and has very unique interior styling. The first of its kind and frankly, breath-taking.

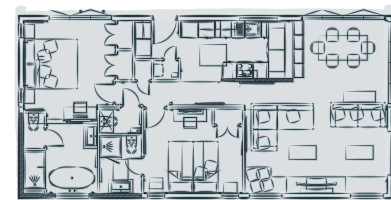
theSummit at a glance

Energy Rating:

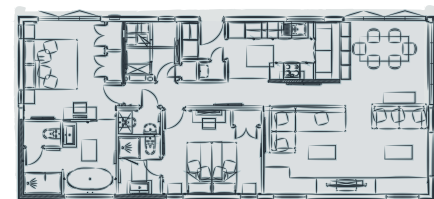
168

Based on a:

45' x 22' - 2 Bed



2 Bedroom Model



3 Bedroom Model



**Bespoke options
available**

special features

- ✓ Horizontal shiplap cedar
- ✓ Dark grey exterior window frames with white interior
- ✓ Vaulted ceiling throughout
- ✓ Media centre and surround sound
- ✓ Bluestone honed jupiter marble basin
- ✓ Chrome fixtures and fittings
- ✓ Feature tile wall
- ✓ Freestanding bath
- ✓ Built-in wardrobes and bunk beds



360° Virtual Tour
available online

Discover more at
www.pathfinderhomes.co.uk





the**ultimate**range

the**DreamCatcher**

A revelation in holiday home living.

With four, floor-to-ceiling, glass panels in the side walls to allow in the maximum amount of light, built-in external dimmer lights and walk-in wardrobes, the DreamCatcher is a revelation in holiday home living.



the**DreamCatcher** at a glance

Energy Rating: **201**

Based on a: **45' x 22' - 3 Bed**



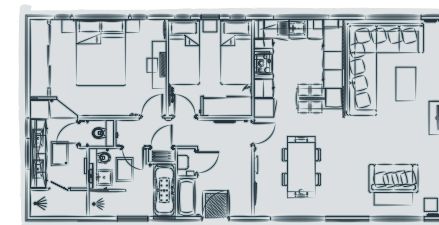
special features

- ✓ Wood finish Velux windows – with electric powered white blinds
- ✓ Under floor heating in bathroom and en-suite
- ✓ Interior speakers in all rooms
- ✓ Fully integrated kitchen appliances
- ✓ Walk in wardrobe in master bedroom
- ✓ Whirlpool, six jet, Jacuzzi bath – in en-suite bathroom

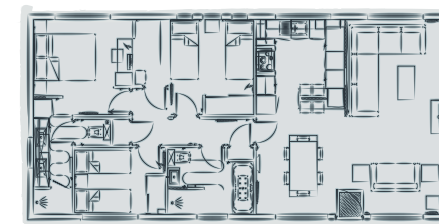


360° Virtual Tour
available online

Discover more at
www.pathfinderhomes.co.uk



2 Bedroom Model



3 Bedroom Model



**Bespoke options
available**





the**ultimate**range

the**HighView**

A relaxed haven with a contemporary design.

Whether you're gazing out over fields, lakes, forests or beaches, the High View really raises the bar when it comes to split-level living. Unlike some holiday homes which pay lip service to the concept with a small raised platform to the living area, The High View takes this to another level altogether – the living and dining rooms are truly elevated, making the very most of the views whatever they may be. With its distinct split roof design emphasised with a cool shade of Canexel and contrasting dramatic windows and doors, it's the height of design!

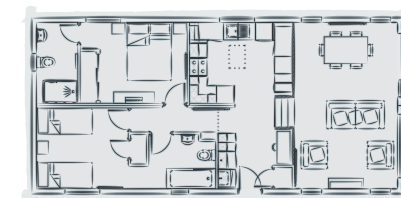
the**HighView** at a glance

Energy Rating:

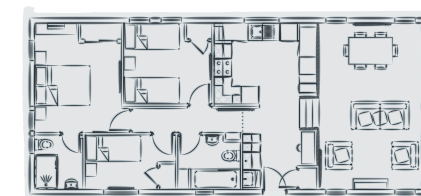
179

Based on a:

46' x 22' - 3 Bed



2 Bedroom Model



3 Bedroom Model



**Bespoke options
available**

special features

- ✓ SPLIT-LEVEL lounge and dining room
- ✓ Choice of external colours
- ✓ UPVC windows, doors, fascias and soffits
- ✓ Oak internal doors
- ✓ Low wall separating raised living area and kitchen
- ✓ Fully integrated kitchen appliances



360° Virtual Tour
available online

Discover more at
www.pathfinderhomes.co.uk



the **single** range

With a special area dedicated to manufacturing the perfect single home at our factory, our single range is as unique and wonderful as you!

Each design boasts a captivating personality of its very own and is cleverly designed to maximise space and create a visually capturing design.







the**single**range

the**Croft**

This changes everything...

We know a home is far beyond just somewhere to rest your head, The Croft is a spacious yet cosy lodge created to be everything to you. Its mystery, quality and leading design is shaped to emancipate your imagination and offer ultimate luxury at a surprisingly affordable rate.

The design scheme features rich, velvety fabrics in deep, luxurious colours which is carried throughout the home. This, combined with the glamorous dark wood retro furniture makes the overall feel one of enchantment, charm and practicality. The plush carpet and soft, pastel wall colours will evoke a warm, cosy emotion particularly in the intimate living room, hosting a bespoke fireplace and large French doors.

Energy Rating:

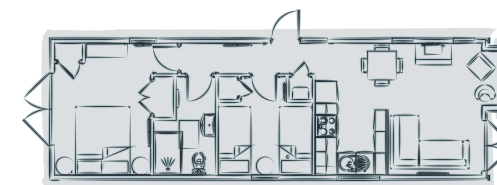
220

Based on a:

45' x 13' - 2 Bed

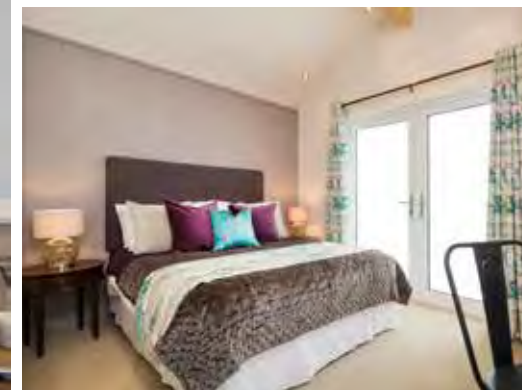
special features

- ✓ Fully integrated kitchen
- ✓ Private integrated balcony
- ✓ Alpine lodge style roof line
- ✓ Fully integrated kitchen appliances



2 Bedroom Model

 **Bespoke options available**



 **360° Virtual Tour**
available online

Discover more at
www.pathfinderhomes.co.uk





the**single**range

the**Single**Tuscany

A little taste of Tuscany - il bambino...

Like its bigger relative, The Pathfinder Tuscany Single Lodge encapsulates the rustic, getaway feel of the Italian Tuscany region where all stresses are relieved from city-life. Arriving at the Tuscany Single, you are greeted by the cute living room area with 2 serene sofas and a traditional cream electric wood burning stove sitting on a raw sandstone hearth. This space is great with the apex to floor windows, to look over the landscape basking in the sunset with a 'night cap' after an invigorating day out exploring the landscape.

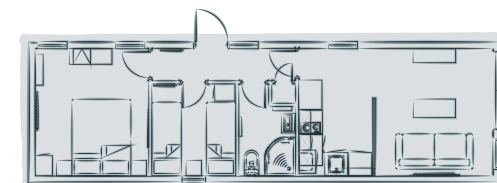
the **SingleTuscany** at a glance

Energy Rating:

221

Based on a:

40' x 14' - 2 Bed



2 Bedroom Model

 **Bespoke options
available**

special features

- ✓ Feature wall in living area and main bedroom
- ✓ Electric wood burning stove
- ✓ Fully integrated kitchen: fridge/freezer, dishwasher, built-in oven and gas hob
- ✓ Large distressed table
- ✓ Cedar cladding in kitchen with Georgian bar windows

 **360° Virtual Tour**
available online

Discover more at
www.pathfinderhomes.co.uk





the**single**range

La Rochelle

Made in Devon, inspired by France.

The emancipation of lodge living. La Rochelle is inspired by typical Mediterranean living, designed with a rustic appeal and built to offer charisma & romantic charm in every corner.

Featuring high spec, modern appliances, a freestanding oval bath and an ingenious layout, this home ticks all the boxes and even creates new categories for single lodge living. This classic design mixes a typical French home with the class of a luxury holiday chateau in the South of France, suitable for both residential and holiday locations. With an impressive and attention demanding mixed exterior of vertical Cedar Cladding and horizontal CanExcel, La Rochelle has tremendous kerb appeal. It's not just the exterior that makes this home special though....

laRoche | at a glance

Energy Rating: **207**

Based on a: **40' x 14' - 2 Bed**

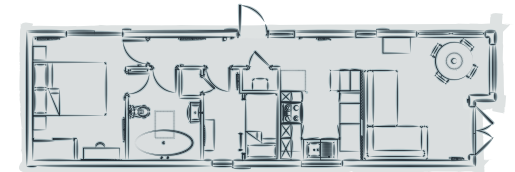
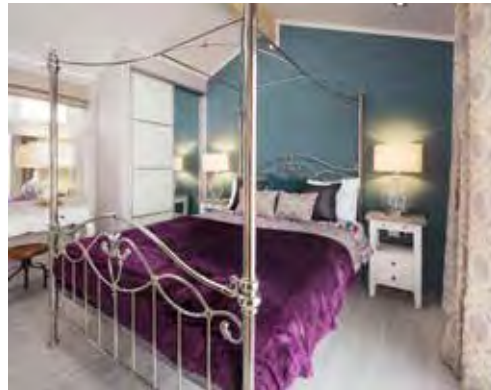


special features

- ✓ Fully integrated kitchen
- ✓ Smeg Freestanding Fridge Freezer
- ✓ Interior Feature Walls
- ✓ Vaulted ceilings
- ✓ Exterior Cedar Cladding & CanExcel
- ✓ Dark Grey UPVC double glazed doors and windows
- ✓ Dark Grey Exterior Shutters

 **360° Virtual Tour**
available online

Discover more at
www.pathfinderhomes.co.uk



2 Bedroom Model



**Bespoke options
available**





the**single**range

theOceanView

The original hideaway.

The bright-idea baby of the Pathfinder Homes family, our little beach hut inspiration is an entirely unique design experience compared to anything else on the market, showing a fresh perspective on lodge living. Cute and quirky, the Ocean View offers a cosy space for an intimate getaway.

theOceanView at a glance

Energy Rating:

205

Based on a:

40' x 14' - 2 Bed



special features

- ✓ Open plan bedroom, lounge and kitchen
- ✓ Front facing panel windows
- ✓ Horizontal Shiplap exterior
- ✓ Fully integrated appliances
- ✓ Vaulted throughout



360° Virtual Tour

available online

Discover more at
www.pathfinderhomes.co.uk



1 Bedroom Model



**Bespoke options
available**





the**singl**erange

theMeadowView

Inspired by a Shepherd's hut design.

The inspiration runs throughout the internal and external façades. A classic, traditional cedar shiplap timber cladding and dark black, thick bar windows and doors, make this bolt hole an inviting, cosy, away from busy life. Step through the cute side door and be wrapped in the warmth inside the Meadow View.

The kitchen in front of you beckons a brew to be made so you can relax and enjoy the lodge. The kitchen's clever layout houses fully integrated appliances with the addition of a stylish, yet retro butchers block with beautiful granite top and a storage display wall rack both finished matching the furniture scheme.

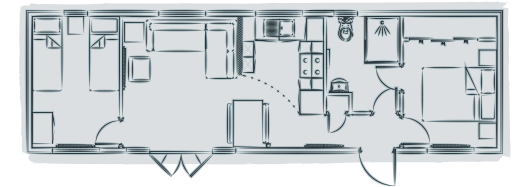
theMeadowView at a glance

Energy Rating:

205

Based on a:

40' x 14' - 2 Bed



2 Bedroom Model



**Bespoke options
available**

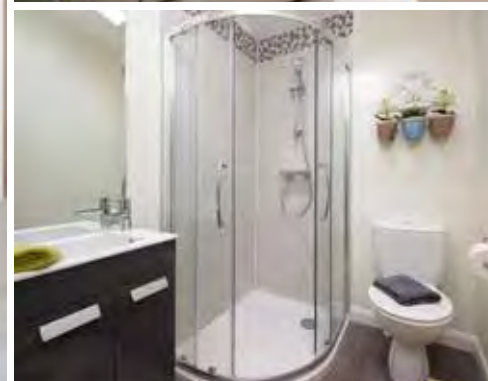
special features

- ✓ Horizontal cedar shiplap exterior
- ✓ Black UPVC exterior window and door frames
- ✓ Black guttering and downpipes
- ✓ Vaulted ceiling throughout
- ✓ Exterior lighting
- ✓ Built-in wardrobes



360° Virtual Tour
available online

Discover more at
www.pathfinderhomes.co.uk







garden pods

& Out Buildings

Created and Built by the UK's Leading
Luxury Lodge Manufacturer you can be
assured of innovative built, inspirational
designs and imaginative interiors. Make
the very most of your space..



GardenPods & Out Buildings

Garden Pods & Out Buildings

Our beautifully designed buildings are created to not only make the very most of your space but could act as an extension to your home, your business or be the actual hub of activity! With almost 60 years' experience building residential park homes and lodges we like to think we know a thing or two about Timber Frame buildings.

Having expanded our expertise we can now build quality out buildings to suit your each and every need. Starting with flat packed garden pods to community hubs, school extensions, offices and receptions!



A whole new concept

THE GARDEN POD

The very first of its kind, a strong and inspired flat packable Garden Pod. This architecturally clever masterpiece is the perfect addition to any piece of land. Our Garden Pods offer park operators a low cost path into the Glamping sector and for home owners, they offer a spacious garden room perfect for entertaining, a hobby room, office or studio!

THE OMNIPOD

The Omnipod is the first pod on the market that is wheel-chair friendly, universally accessible and completely inclusive. The innovative, stylish and modern design provides unprecedented versatility, complete with a fitted kitchen, optional fridge, microwave, induction hob, a state of the art wet room, hard wearing floors and high spec insulation and heating options suitable for year round occupancy.

TOILET AND SHOWER BLOCKS

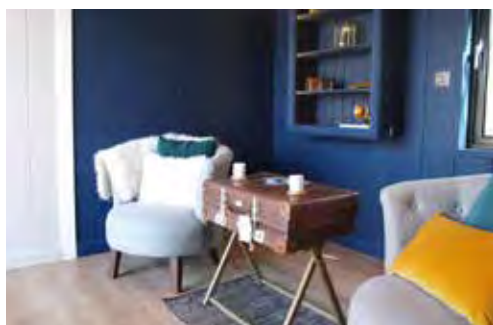
Somewhat of a staple to any holiday park or community area. Our facility blocks are of course very practical but also ensure your guests 'go' in the most stylish way possible. Built bespoke to suit your landscape, let us make the necessities pure luxuries!

OFFICES AND HUBS

Only restricted by your imagination, the offices and hubs we build are beyond belief! Built bespoke, we can facilitate any shape or size and whilst being built to your exact standards, we offer zero compromise in quality. Our office blocks have travelled as far as Scotland and are the latest must have for any business.

THE FINAL WORD

Our outbuildings are our biggest and most exciting venture to date and with over 60 years' experience in timber framed buildings you can be assured of attentive project design, outstanding quality and naturally, great service!





Setting the Standard... Our Build Quality

With the perfect blend of cutting edge technology, high quality materials and a knowledgeable, dedicated team, we build our homes to the very highest standard, surpassing regulations and all expectations. Every home is built to the governing regulation standard (known in the industry as BS3632:2015, the British Standards for Building Park Homes), this means whether you choose a traditional yet luxurious Park Home or an innovative and modern Holiday Lodge, your new sanctuary will be built to be lived in.

Made expertly by our experienced craftsmen, from the steel chassis up to the last tile on the roof every Pathfinder Home is built with strong attention to detail ensuring you peace of mind.

EVERY HOME WE CREATE FEATURES:

- ✓ External wall thickness of 160mm to 188mm dependent on the choice of finishing
- ✓ 140mm wool based quilted insulation in the walls in all our twin homes
- ✓ 200mm wool based insulation in roof
- ✓ 140mm wool based insulation in floor
- ✓ Ventilated soffits & fascias to match finishing
- ✓ A rated appliances fitted to bespoke design
- ✓ Argon gas filled double glazed units fitted with 'K' glass reflecting heat back into the home
- ✓ Choice of 58mm or 70mm A graded UPVC frames finished in a choice of colours
- ✓ Low energy lighting fitted throughout as standard

These structural energy saving additions add up and mean that every home we build gives an NCC industry calculated U value for walls & floors is less than 0.35 and the roof less than 0.20. This exceeds the benchmark set by the regulating body and passes the savings directly onto you! Read on to see the average U Values of our homes.

Pathfinder Homes Build Quality with Average U Values

Element	Specification	BS3632:2015 Regulations	An average Pathfinder Home	Percentage better than BS3632:2015
Roof	Plasterboard Flat Ceiling	0.20	0.18	10%
	Plasterboard Vaulted Ceiling	0.20	0.18	10%
	MDF Lining Vaulted Ceiling	0.20	0.18	10%
Wall	Stucco	0.35	0.27	22%
	CanExcel	0.35	0.25	29%
	Cedar	0.35	0.25	29%
Floor	Carpet	0.35	0.25	28%
	Vinyl Flooring	0.35	0.25	28%
	Laminate Flooring	0.35	0.24	25%
Average		0.30	0.22	26%





Our Bespoke Service... Making your home unique

You really like the exterior on The Evolution but adore the layout of The Keeper's Lodge? You love the interior styling and colour way of The Ocean View but, much prefer The Tuscany layout? Not a problem, when you choose Pathfinder Homes, your home can be designed exactly to suit you, so combining features of different homes really is no problem; or, if you choose... you can even start from a blank canvas!

With Pathfinder Homes you can decide on every aspect of the design, from the exterior finish to the kitchen sink! For those who know exactly what they want, our Selection Studio will be like heaven. Our in-house design team will help you to make your every dream a reality. For those who want a little more guidance, then that's exactly what you'll get. From carpets to curtains, decking to door handles, our Selection Studio is the perfect place to be inspired, and we can walk you through it, every step of the way.

You can start from a blank canvas or from a preselected, standard design, our selection studio really presents a tangible design experience. Touch and feel the fabrics, walk through the kitchen and enjoy a coffee on the couch. All you need to do is relax with a nice fresh coffee and tell us what you want – we will make it happen.





Looking after our world

When you buy a Pathfinder home we not only commit ourselves to building your home for the future, we also commit ourselves to trying to reduce the impact our building has on that future by taking a number of steps to protect the environment.

We recycle just about everything and anything! We operate a 'Zero to Landfill' policy at our headquarters and are a passionate bunch, dedicated to reducing our footprint. Our suppliers are also committed to being 'green', recycling waste, using recycled packaging and in one case using recycled wood-pulp to create cladding!

We build with a conscience, our materials are carefully selected for their top quality and minimal impact on the environment. But alongside the short term vision of sustainable resources the homes we create also go on to save energy long after leaving our factory.

Design your very own Pathfinder home with our Bespoke Service. We want to know your desires and ideas of the perfect home so we can integrate these into the finished product that you have dreamt of. A Pathfinder Home is a bespoke experience for every individual customer.

Our build specification is of the highest quality in the industry and this is something we are dedicated to continue and put emphasis on as an integral aspect of your ultimate home.



Warranty

The Gold Shield 10-year structural warranty scheme is designed to offer the same level of cover, as you would expect to enjoy with a NHBC warranty on a traditional brick built property. This scheme acts as a warranty and is provided by and administered on behalf of the National Caravan Council (NCC) and insurance backed to give you peace of mind.

We register every home and pay the full insurance premium for the duration of the warranty but please do note in order for this warranty to stand your home must be sited on a park registered with Gold Shield and you must remember to send back your registration form when you move in.

Aftercare

We have a dedicated team of professionals, devoted to looking after you and your new Pathfinder Home. We pride ourselves on our excellent customer service and strongly believe this is true well after the set delivery date. Our Aftercare Team who are available to provide any information, advice and assistance you may require.

Trade Service

Whether you are an already established park or about to start a brand new venture, Pathfinder Homes are the manufacturer you have been looking for.

We don't believe simply providing you with a beautiful home is enough and believe in building sustainable, strong relationships with all our customers. That's why we continue to support you throughout the lifetime of ownership.

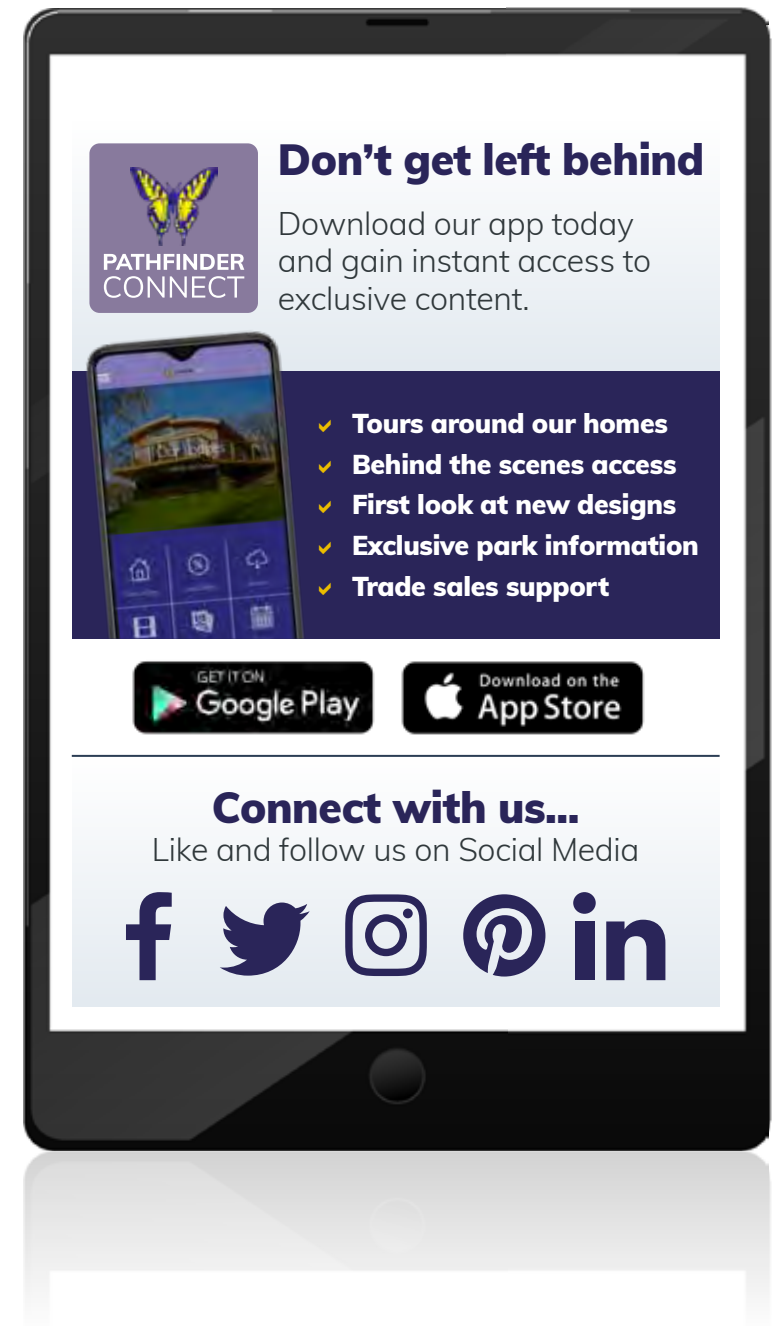
Marketing & Sales Support

With our reputable brand, passionate team of creatives & large buying power we can work together to build imaginative and audience captivating campaigns to promote your park. Our experienced Marketing Professionals are always on hand to provide you with advice and assistance and love working with parks and sharing new initiatives and ideas!

Rest assured, our sales team will endeavour to be present at your own shows & open days to provide you & your guests with the technical information surrounding our homes, or even just to provide you with an extra pair of hands!

Propping & Dressing

Our Creative Department live and breathe home design, so who best to present your new home in its best light? Just say the word and our team will put together a full dressing list for your home, bespoke or standard. They will create a prop map, provide a full itinerary of items and even visit the home once fully sited and finished and prop the home.



Telephone: **01626 833 799**

Email: **sales@pathfinderhomes.co.uk**

PATHFINDER HOMES Cavalier Road, Heathfield, Newton Abbot, Devon TQ12 6TU

DISCLAIMER - Due to our policy of continual improvement occasional changes to specification and layout may occur. The photographs shown in this brochure are for illustrative purposes only and are not intended to form part of a contractual agreement. Interior design images act as a guide only and interiors may vary from those shown. Some photographs may include optional upgrades. To avoid confusion or disappointment please discuss your precise requirements with a member of our sales team by calling 01626 833 799 - we are here to help you.



www.pathfinderhomes.co.uk

INNOVATION • INSPIRATION • IMAGINATION